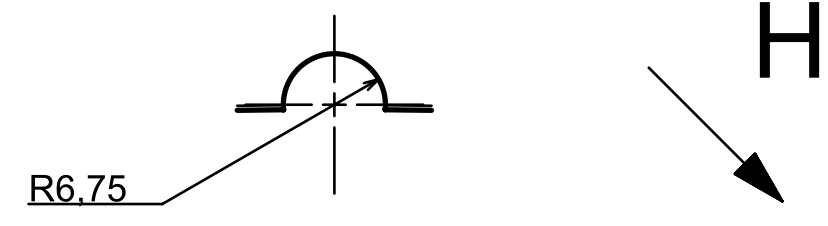
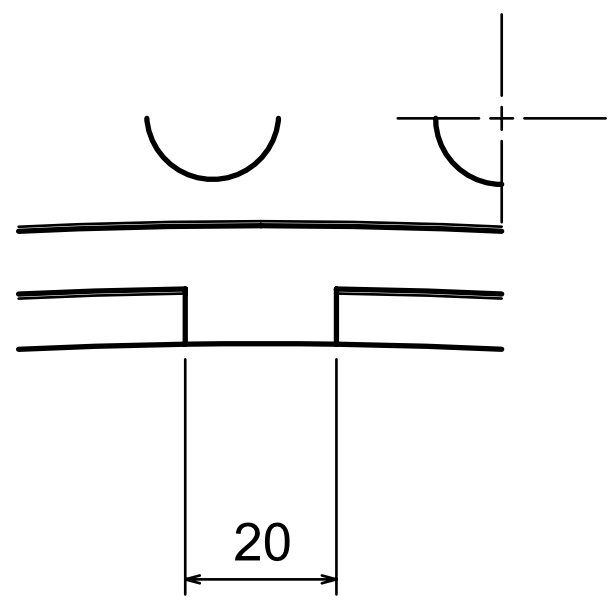


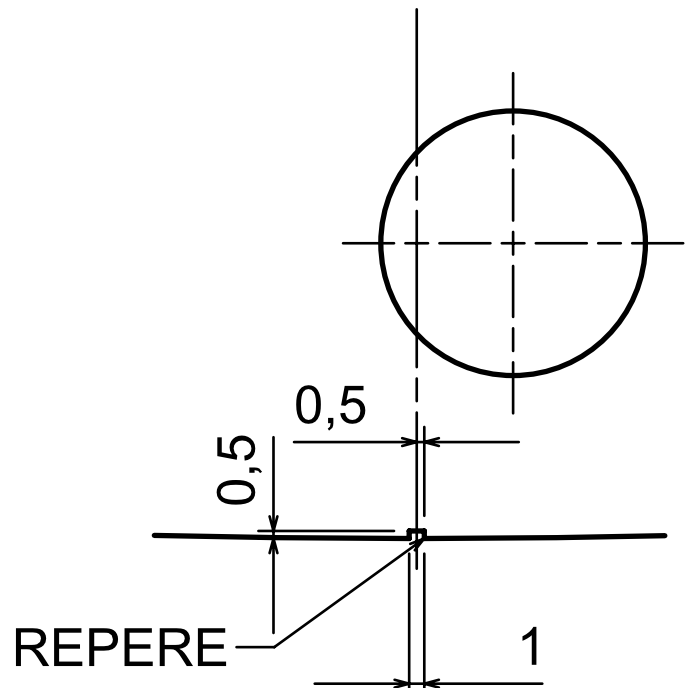
DETAIL D
ECHELLE 1:1



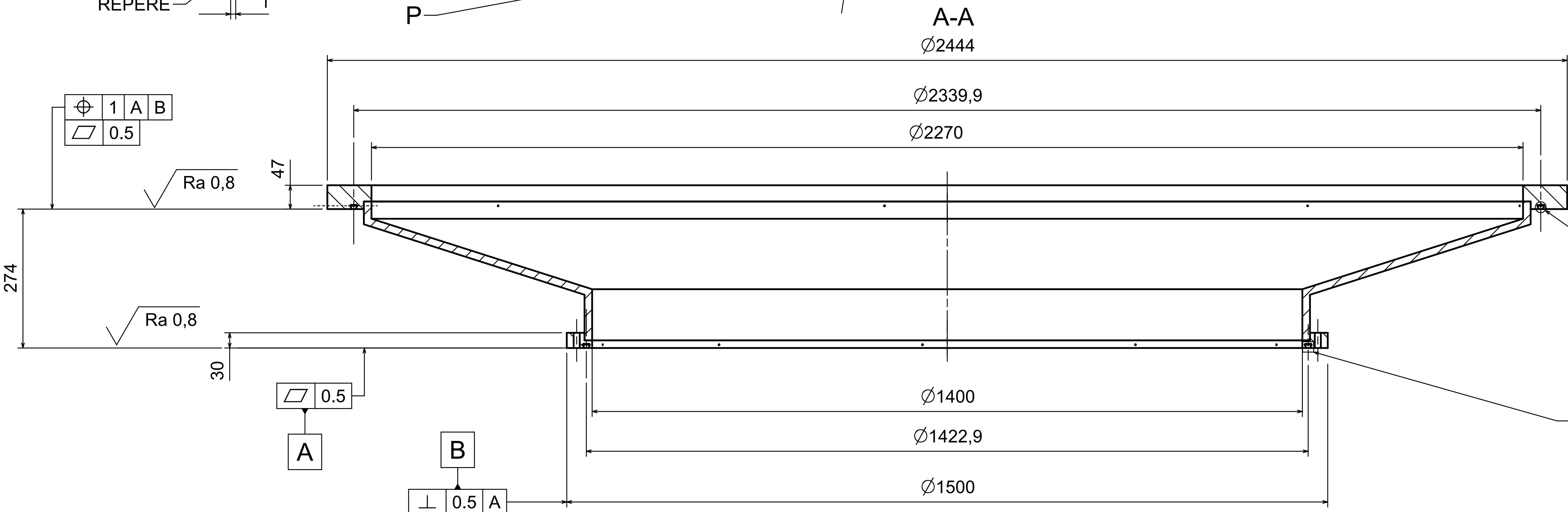
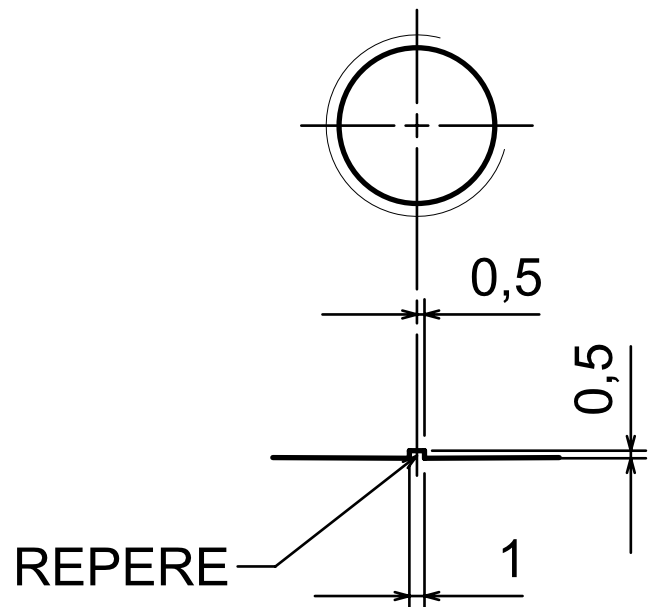
DETAIL E
ECHELLE 1:1



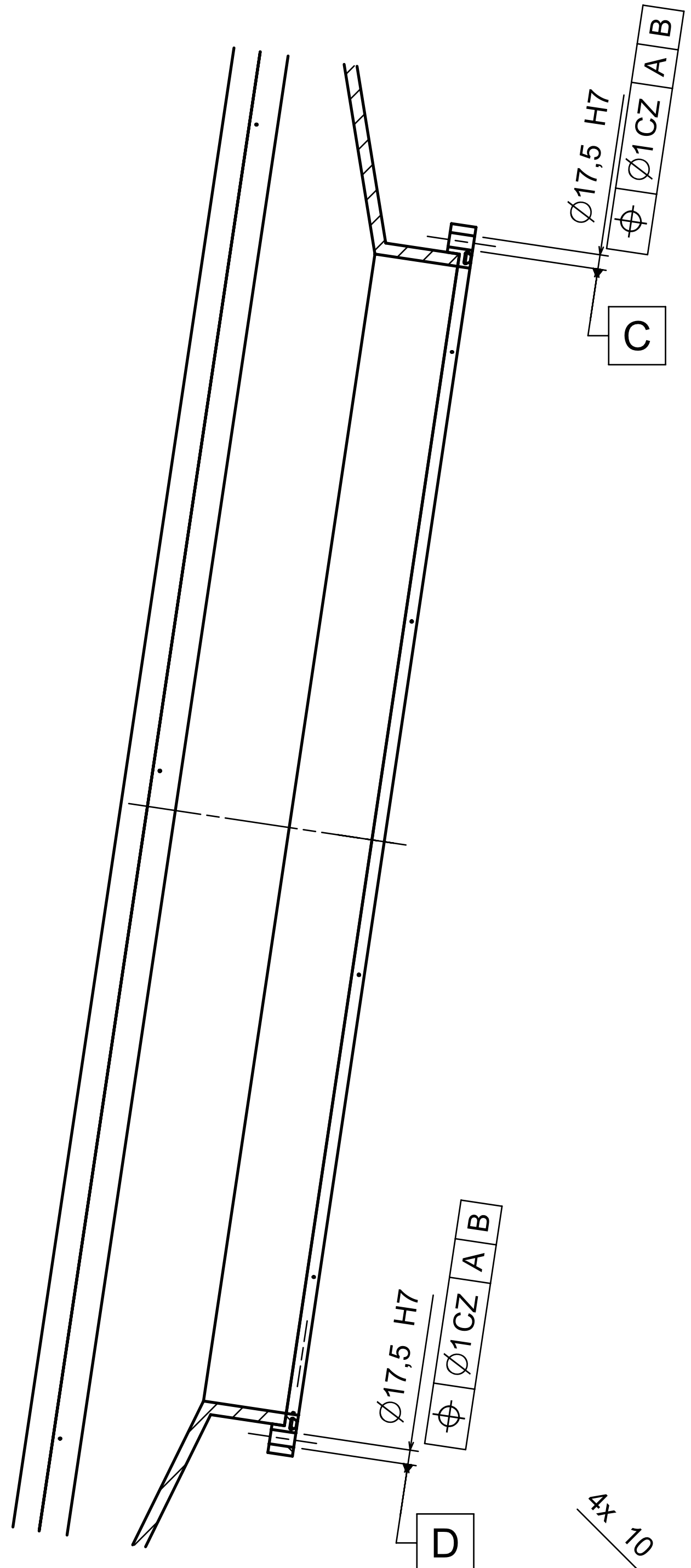
DETAIL R
ECHELLE 2:1



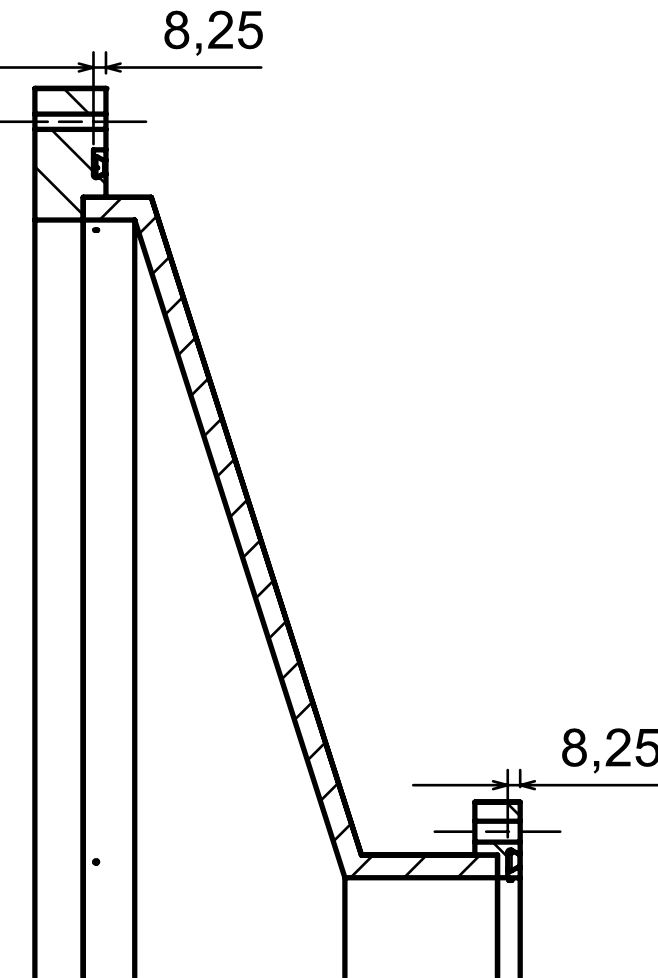
DETAIL P
ECHELLE 2:1



B-B

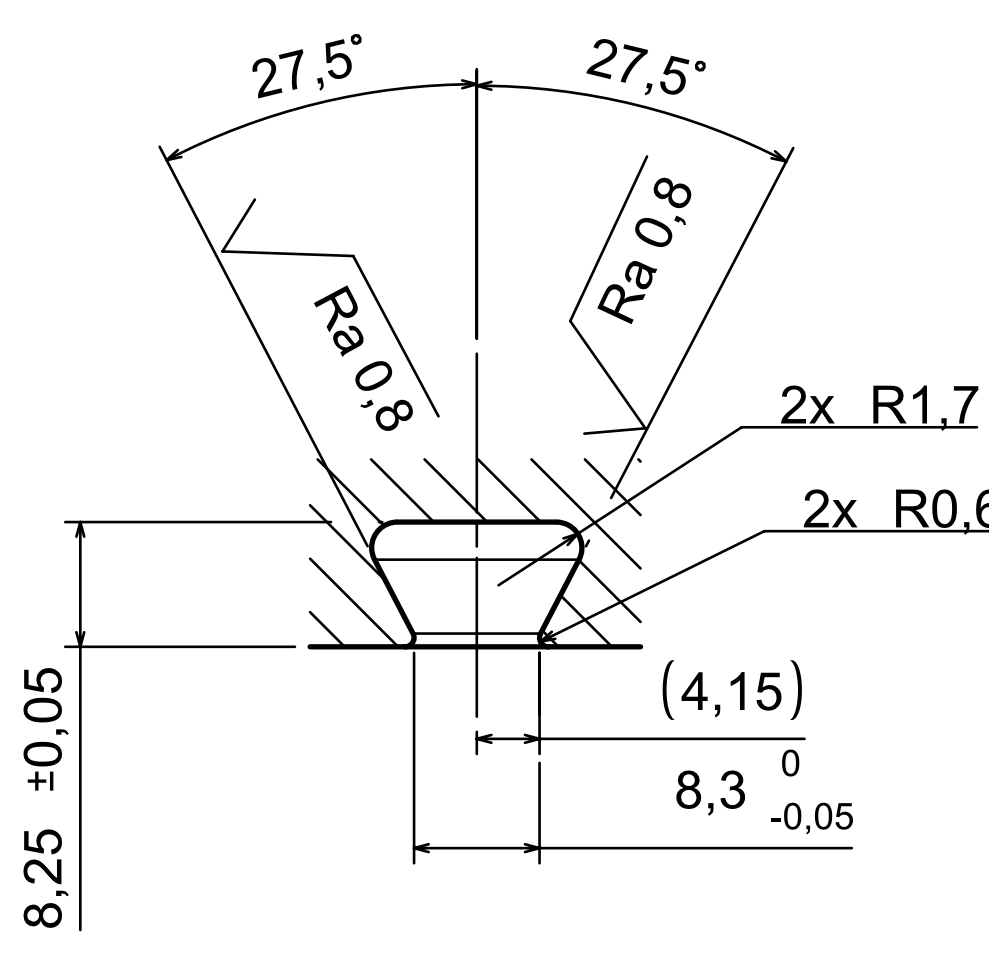


C-C

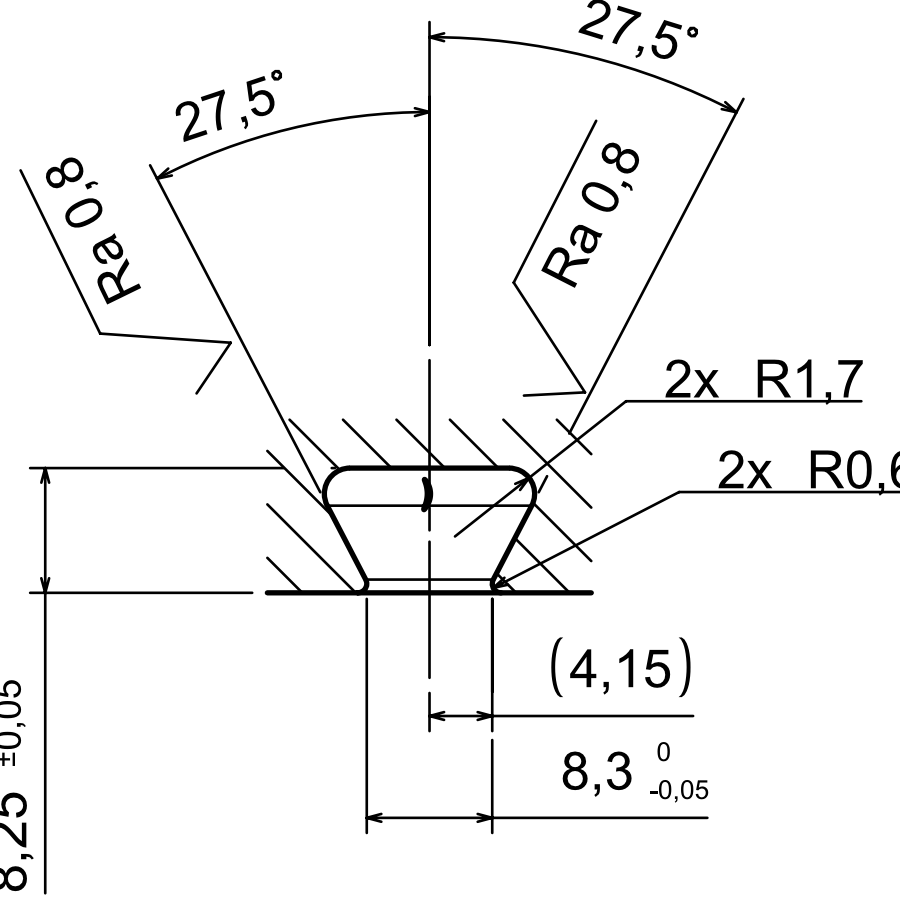


VUE H

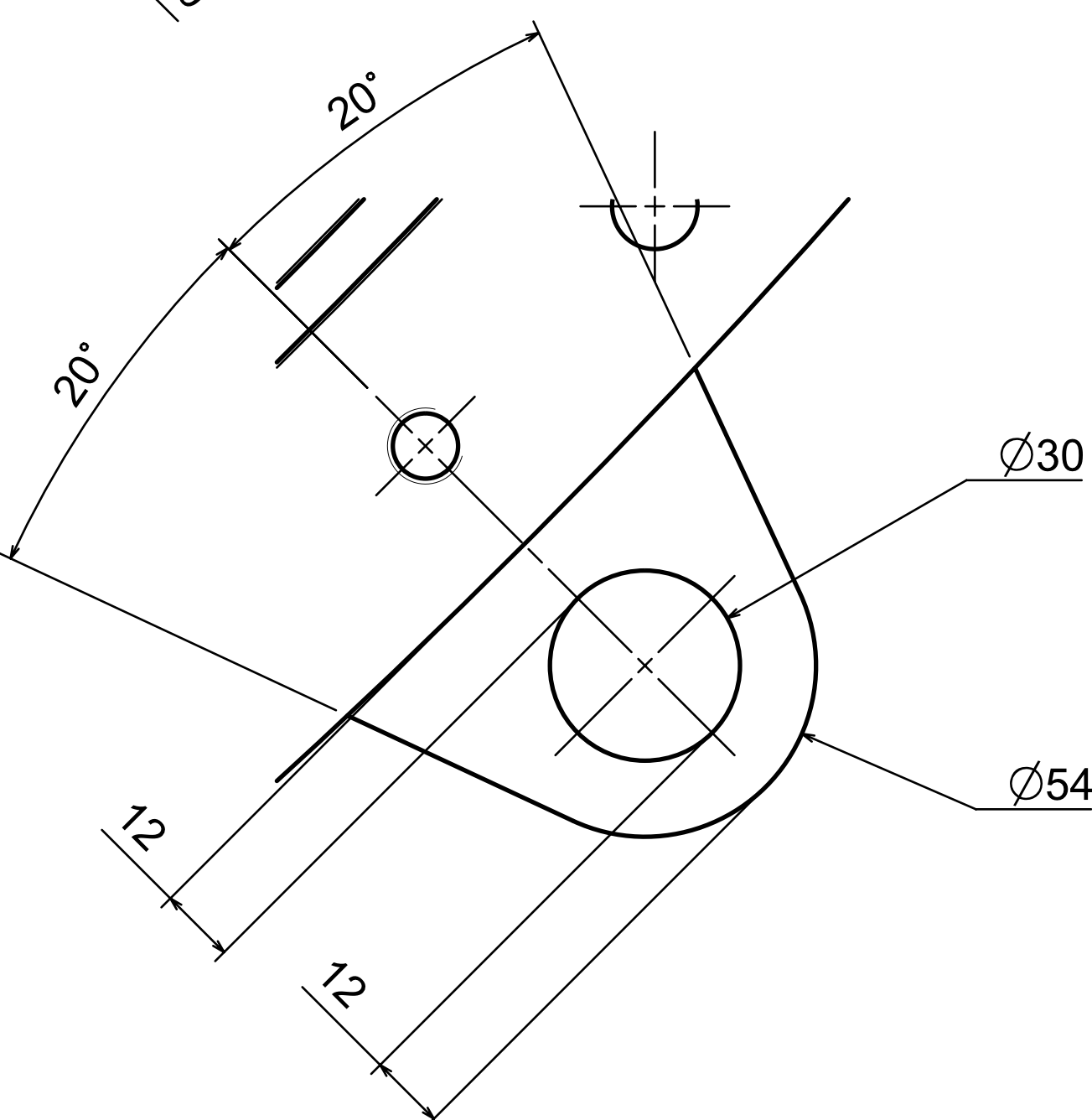
DETAIL G
ECHELLE 2:1



DETAIL F
ECHELLE 2:1



DETAIL J
ECHELLE 1:1
8 USINAGES IDENTIQUES
SOODES

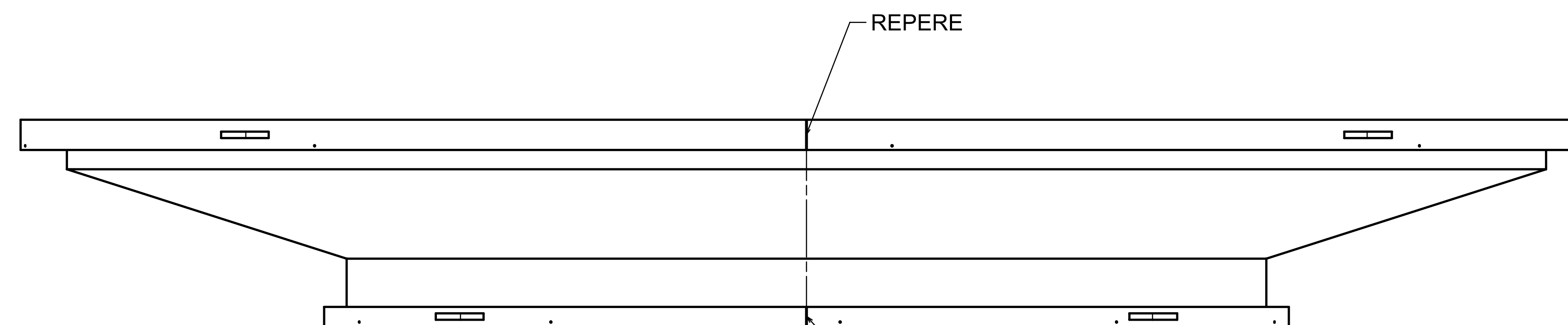
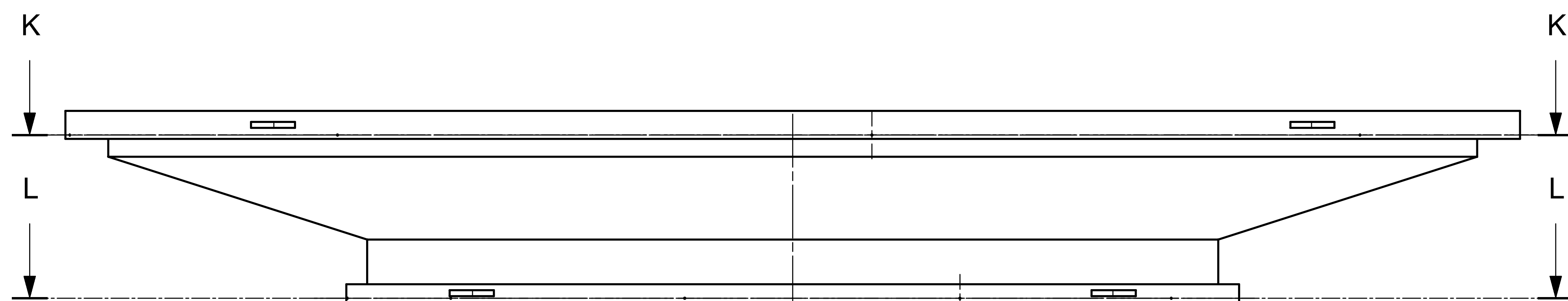


Ensemble soudé

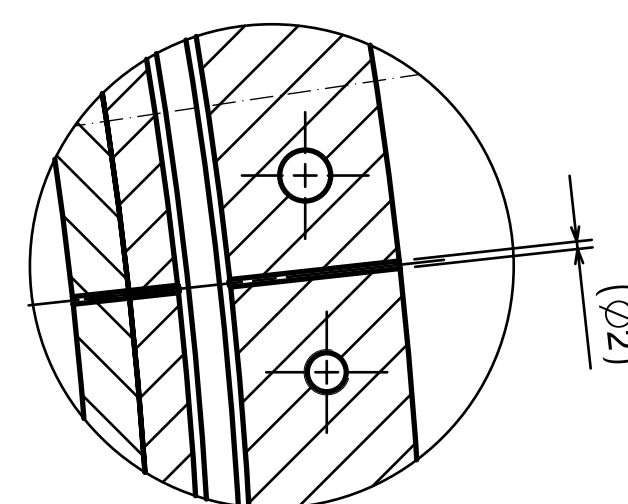
- Nota :
- Ensemble Mécano-soudé
 - Ensemble étanche au vide :
Taux de fuite 1.10-8 Pa.m3.s-1
(conformément aux normes)
 - Soudures d'étanchéité
 - Soudure structurales, discontinue
 - Cotation à vérifier après soudure



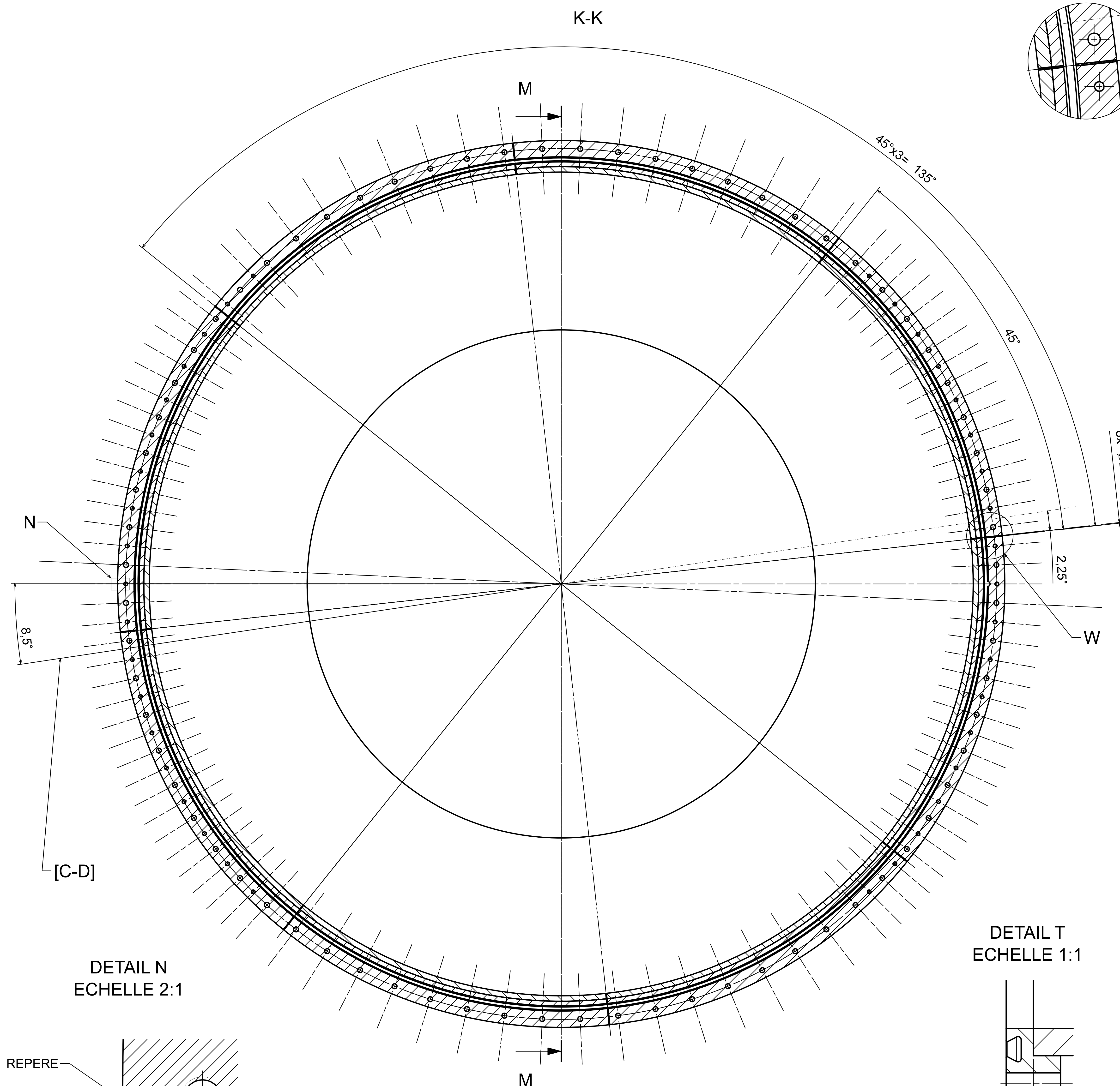
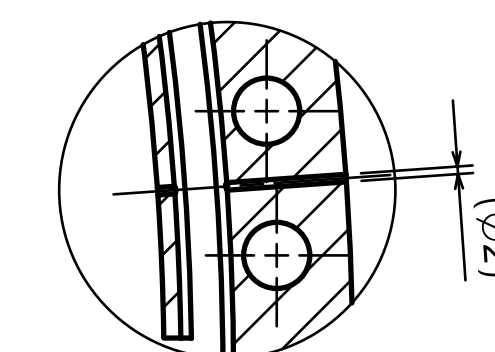
Matière /Material : 1.4404 (AISI 316L)	
Trait Th /Heat treatments : -	
Protection /Shielding : -	
Casser les angles vifs Break all sharp edges	
Tolérances Générales I.R.G. <input checked="" type="checkbox"/> Ra 3,2	Séparateur 0,00 <input checked="" type="checkbox"/> 0,00
ISO 2768 - m K	Ss-Traitant /Supplier
Quantité /Quantity : 658	Echelle /Scale : 1:1
Massé /Mass : 658	kg
Plan dessiné avec le système C.A.D. NX. Ne peut être modifié que par le même système. NX C.A.D. drawing. Do not make manual revisions or alterations.	
Ref. C.A.O. : 00097149 / AA	
Dess. :	Vérif. :
Date :	
P2 MicroMegas Chapeau court Bride conique entrée chapeau	
Ref. ext. : -	
Contrat : -	
71 P2MM DM- 1110 003	
AA	



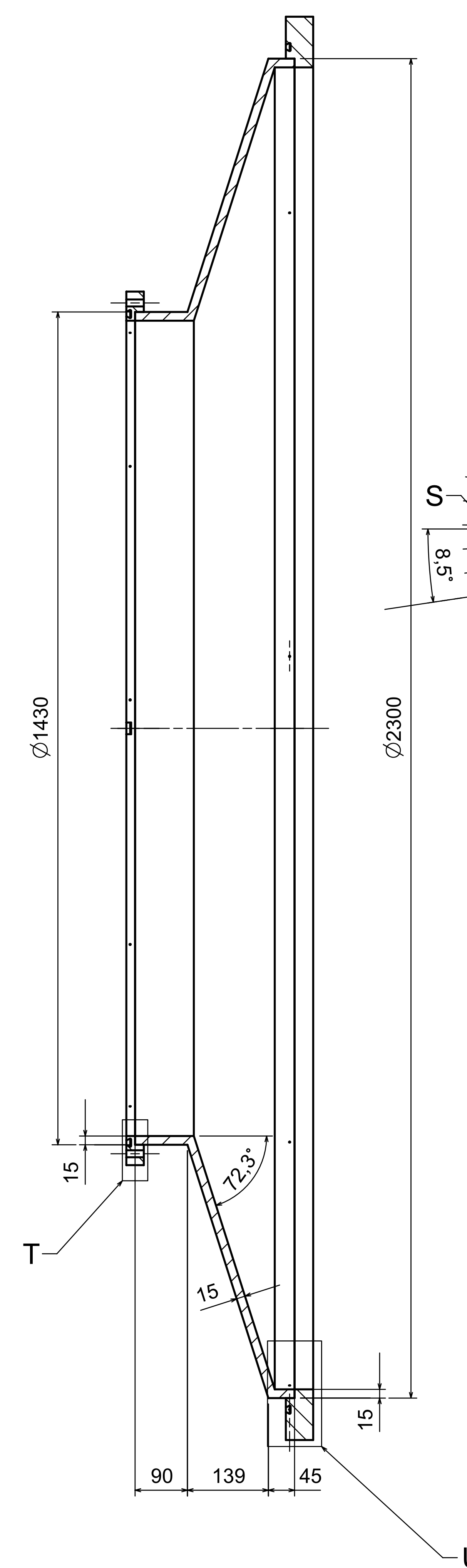
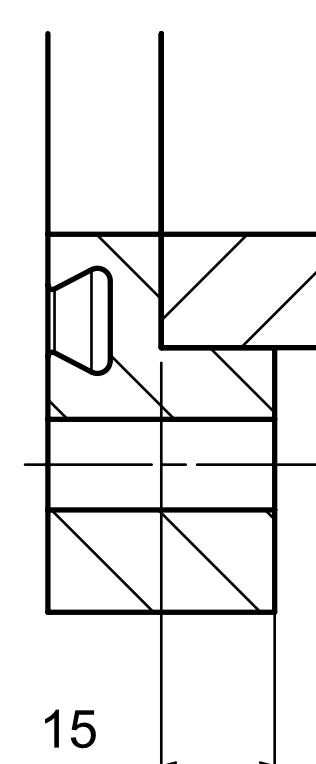
DETAIL W
ECHELLE 1:2



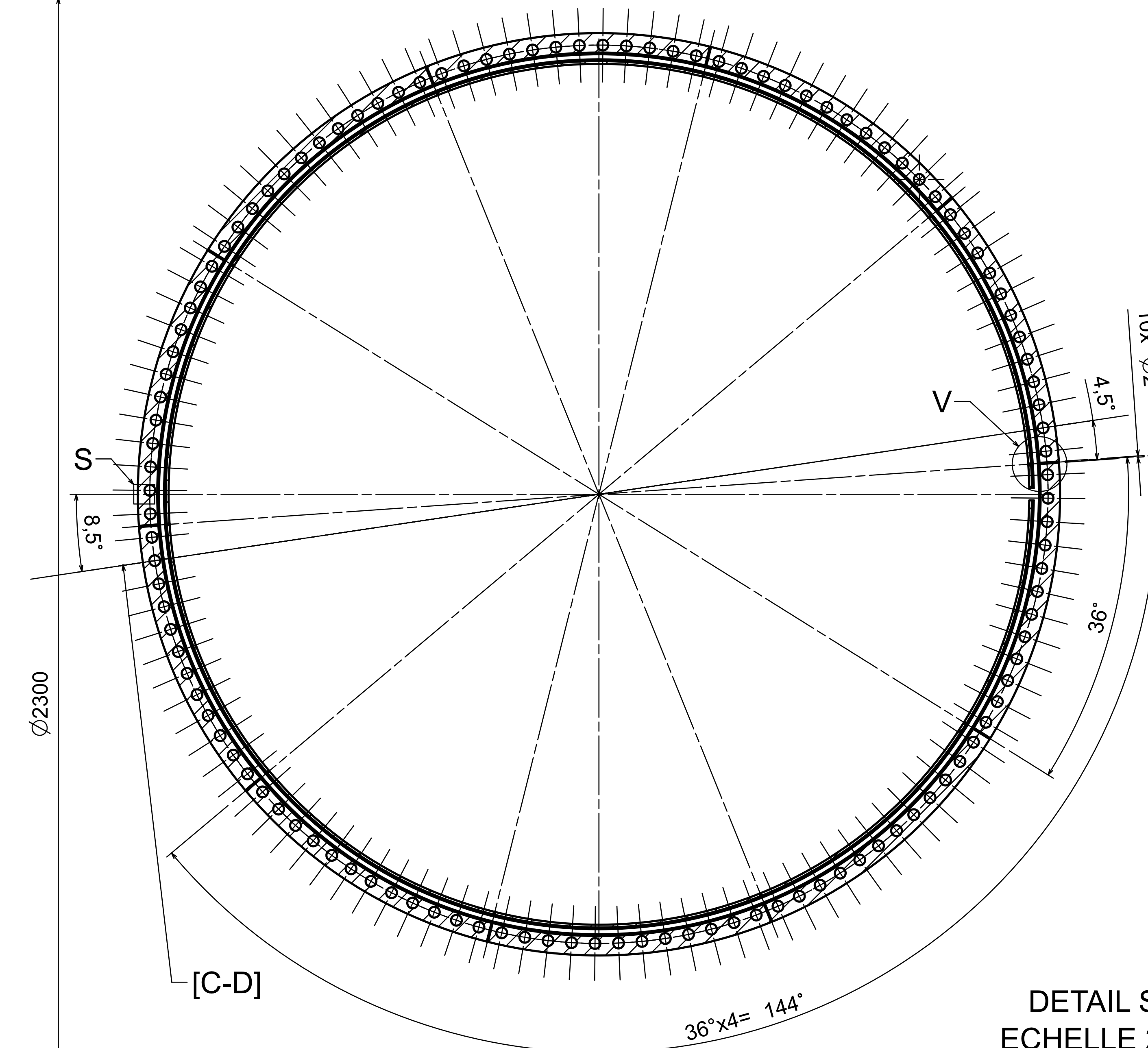
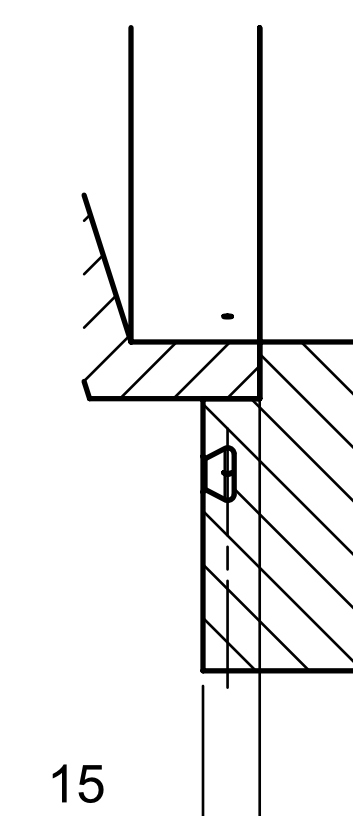
DETAIL V
ECHELLE 1:2



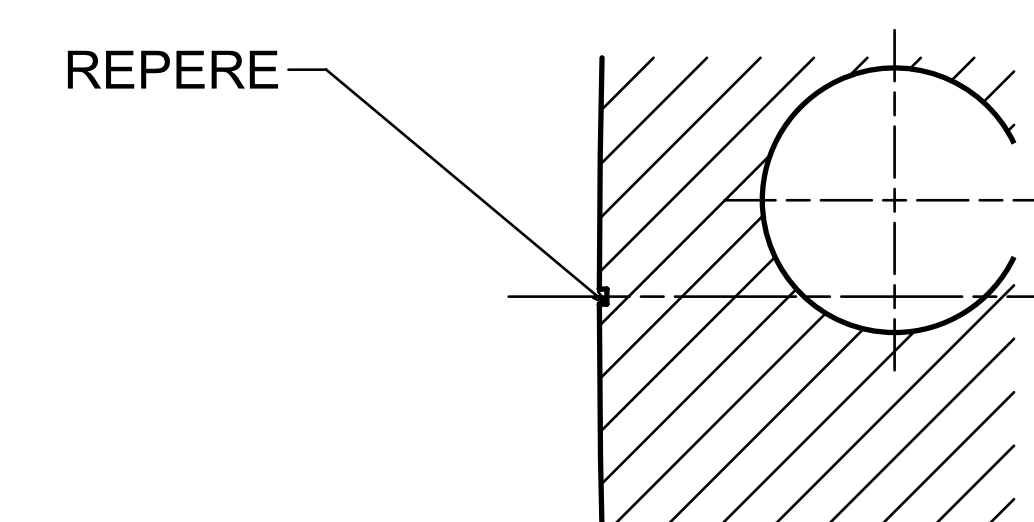
DETAIL T
ECHELLE 1:1







DETAIL U
ECHELLE 1:2



DETAIL S
ECHELLE 2:1



Casser les angles vifs Break all sharp edges		Matière /Material : 1.4404 (AISI 316L) Trait Trt/Heat treatments : -	
Tolérances Générales I.R.G.  Ra 3.2 ISO 2768 - m K		Protection /Shielding : - Séparateur Separator Ss-Traitant /Supplier	
		0,00 0-00	
		Quantité /Quantity : - Echelle /Scale : 1:1 Masse /Mass : 658 kg	
Plan dessiné avec le système C.A.O. NX. Ne peut être modifié que par le même système. NX C.A.D. drawing. Do not make manual revisions or alterations.			
Réf. C.A.O. : 00097149 / AA			
Dess. 		Vénif.	Date
P2 MicroMegs Chapeau court Bride conique entrée chapeau			
Ref. ext. : -		Contrat : -	
(Noté parties C.A.O. et dessin d'avec licence spéciale ou autorisation expresse 30 (le 11/01/1987) This drawing may not be used without special license		Planche /Sheet : 2/2	
 		71 P2MM DM- 1110 003 AA	